
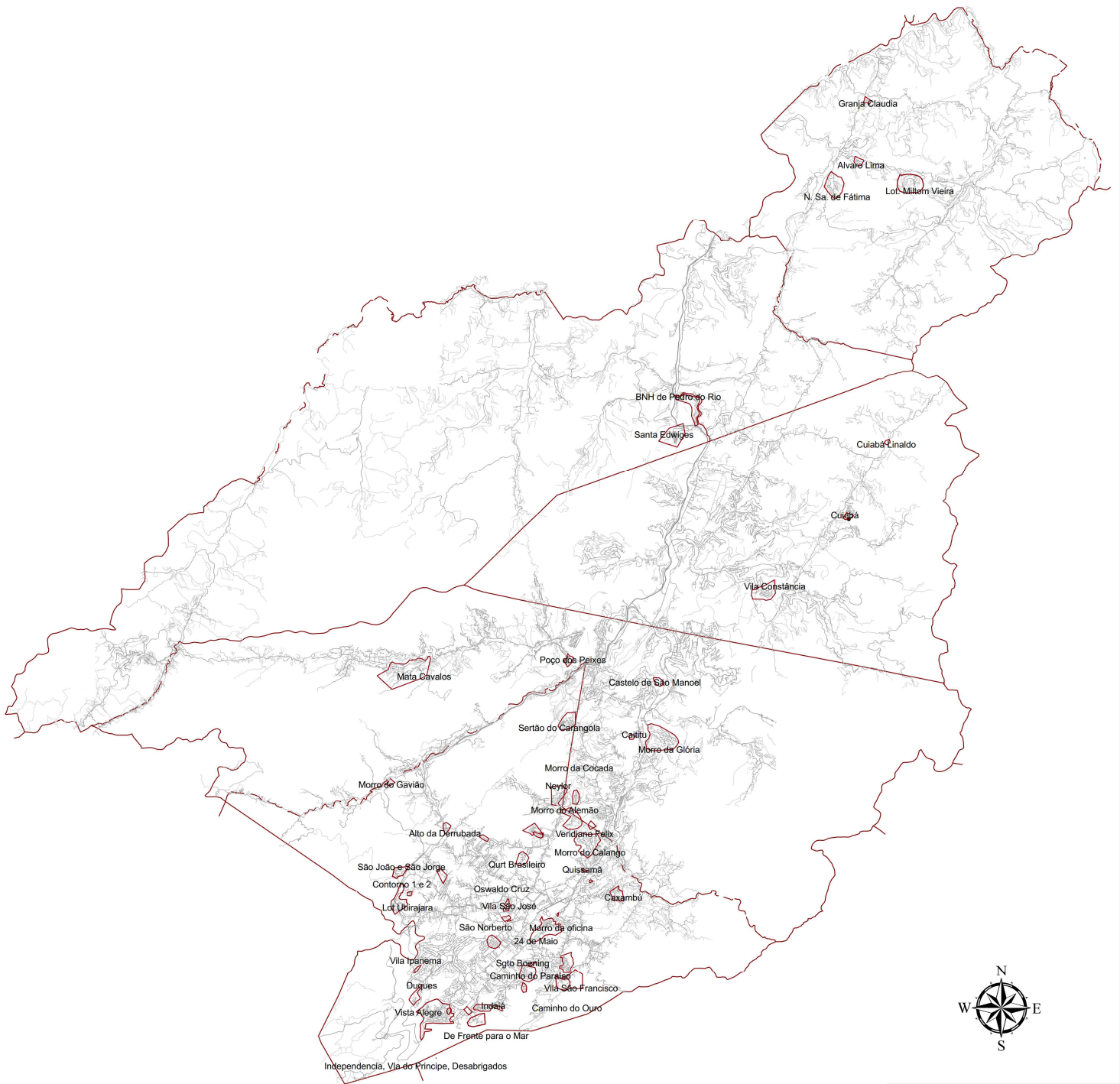




PREFEITURA MUNICIPAL DE PETRÓPOLIS
 SECRETARIA DE PLANEJAMENTO E URBANISMO

Local:
Abairramento Informal

Escala:

 0 550 1.100 2.200 3.300 4.400 5.500 Meters




**PREFEITURA MUNICIPAL
 DE
 PETRÓPOLIS**
 SECRETARIA DE PLANEJAMENTO E URBANISMO

Local: **AEIS**

Escala:












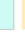

0 8001.600 3.200 4.800 6.400
 Meters

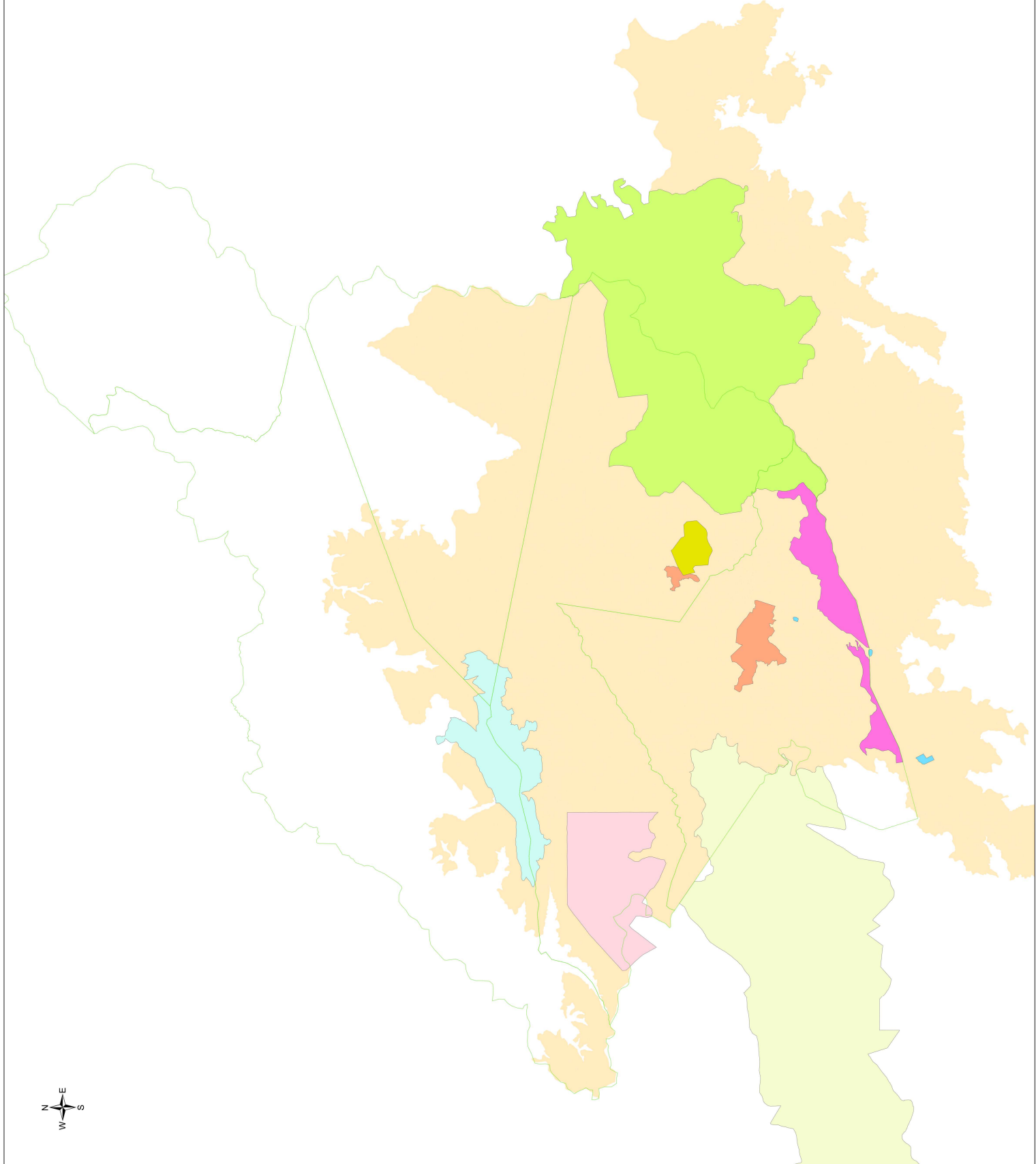


Legenda

areas protegidas geral

NOME

-  APA de Maricá
-  Parque Estadual da Pedra Branca
-  Parque Estadual da Serra da Tiririca
-  Parque Nacional da Serra dos Órgãos
-  Parque Nacional da Tijuca
-  Patrimônio Histórico
-  RPPN
-  Reserva Biológica de Araras
-  Reserva Biológica do Tinguá
-  Reserva Ecológica da Alcobaça
-  Serra Estrela
-  Zona de Vida Silvestre
-  zoneamento



**PREFEITURA MUNICIPAL
DE
PETRÓPOLIS**

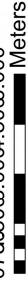
SECRETARIA DE PLANEJAMENTO E URBANISMO

Tema:

APA

Escala:

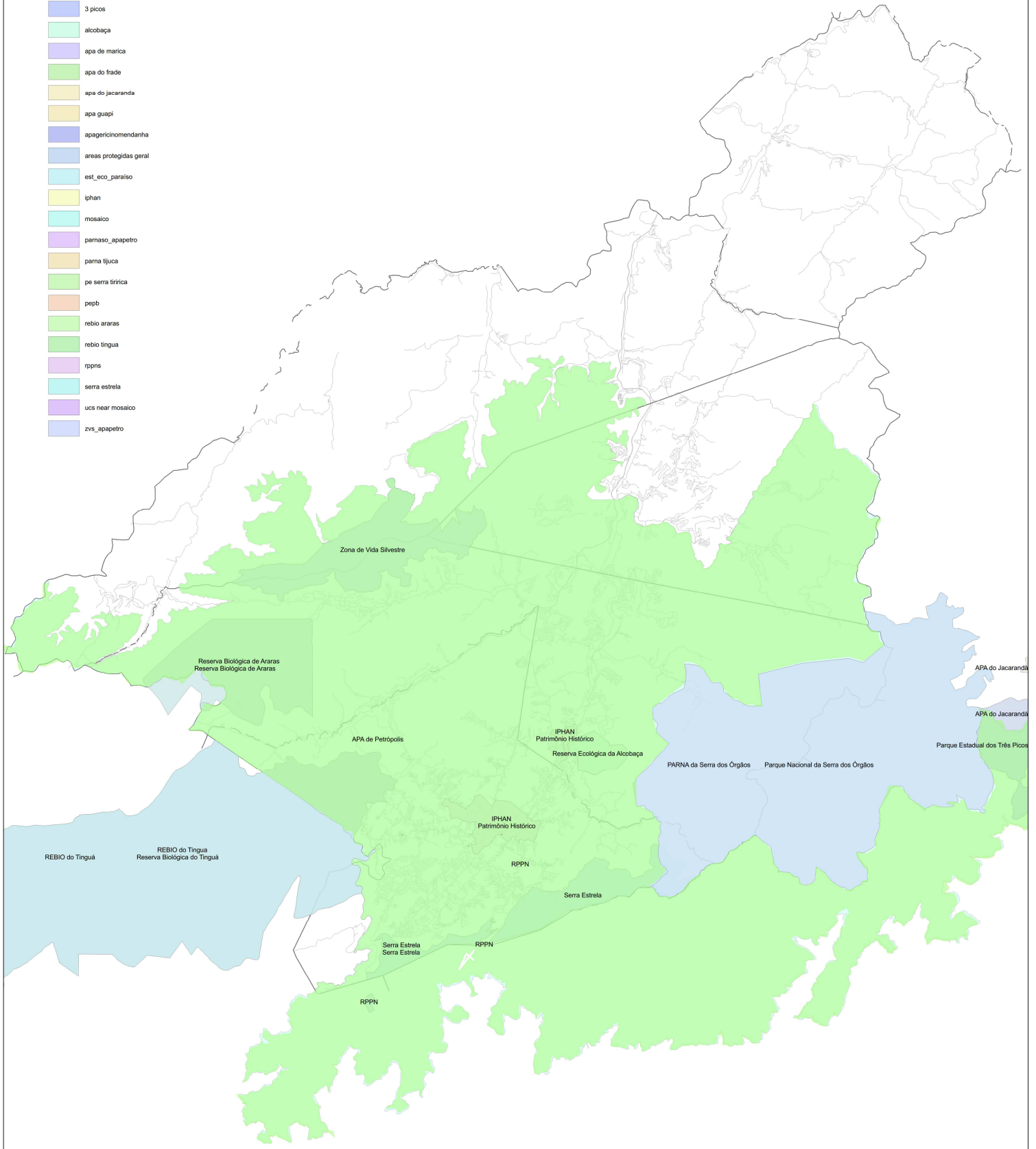
0750603.0004.5006.000




Meters


Legenda

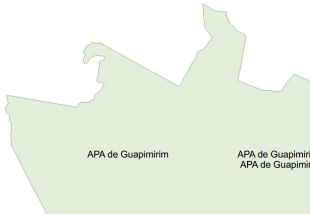
- Apa Petrópolis
- 3 picos
- alcobaça
- apa de marica
- apa do frade
- apa do jacaranda
- apa guapi
- apagericinomendanha
- areas protegidas geral
- est_eco_paraiso
- iphan
- mosaico
- parnaso_apapetro
- parna tijuca
- pe serra tiririca
- pepb
- rebio araras
- rebio tingua
- rppns
- serra estrela
- ucs near mosaico
- zvs_apapetro

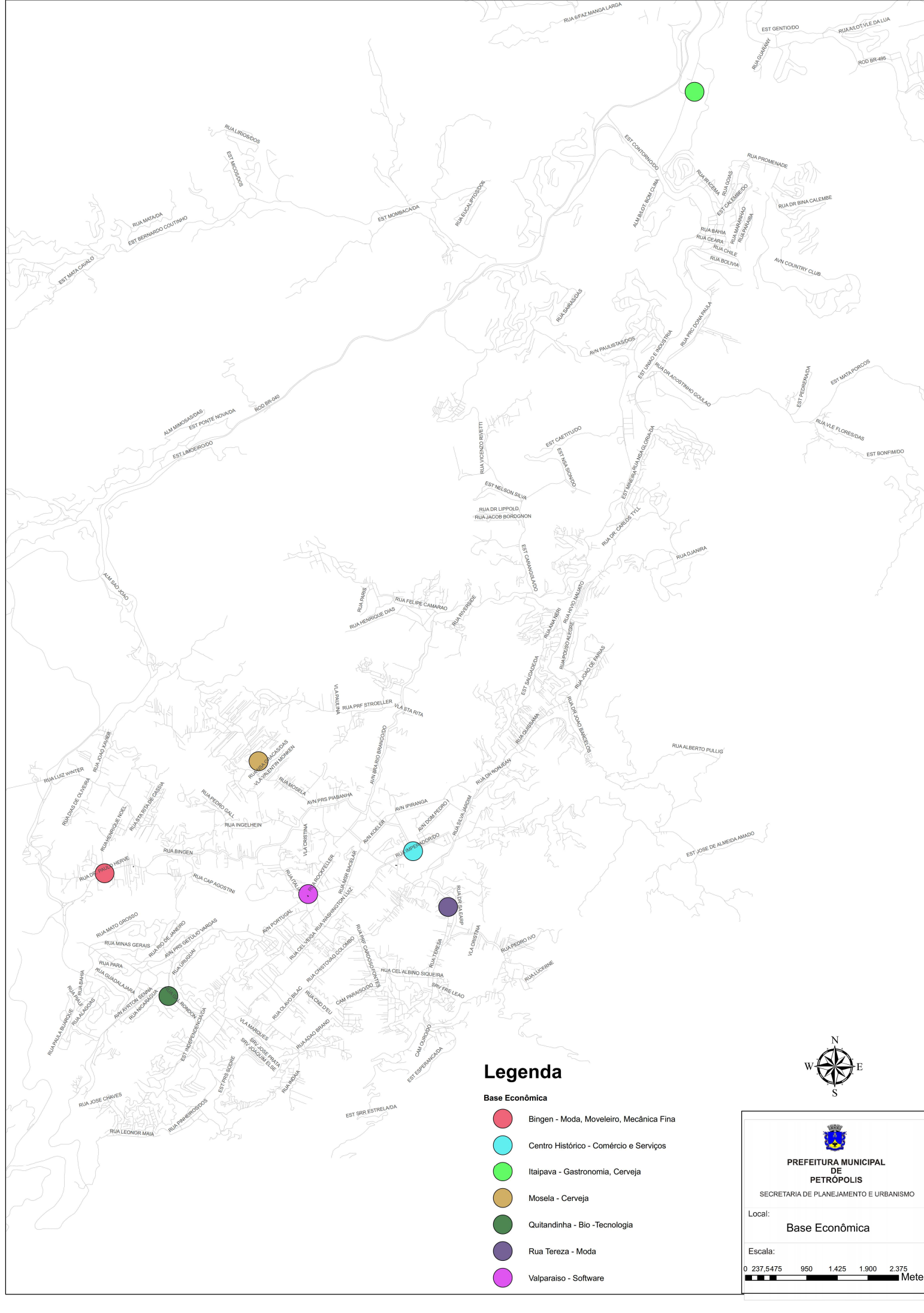



PREFEITURA MUNICIPAL DE PETRÓPOLIS
 SECRETARIA DE PLANEJAMENTO E URBANISMO

Local: **Áreas de Preservação**

Escala: 0 450 900 1.800 2.700 3.600 4.500
 Meters





Legenda

Base Econômica

- Bingen - Moda, Moveleiro, Mecânica Fina
- Centro Histórico - Comércio e Serviços
- Itaipava - Gastronomia, Cerveja
- Mosela - Cerveja
- Quitandinha - Bio -Tecnologia
- Rua Tereza - Moda
- Valparaíso - Software





PREFEITURA MUNICIPAL
DE
PETRÓPOLIS
 SECRETARIA DE PLANEJAMENTO E URBANISMO

Local: **Base Econômica**

Escala:

0 237,5475 950 1.425 1.900 2.375 Metres

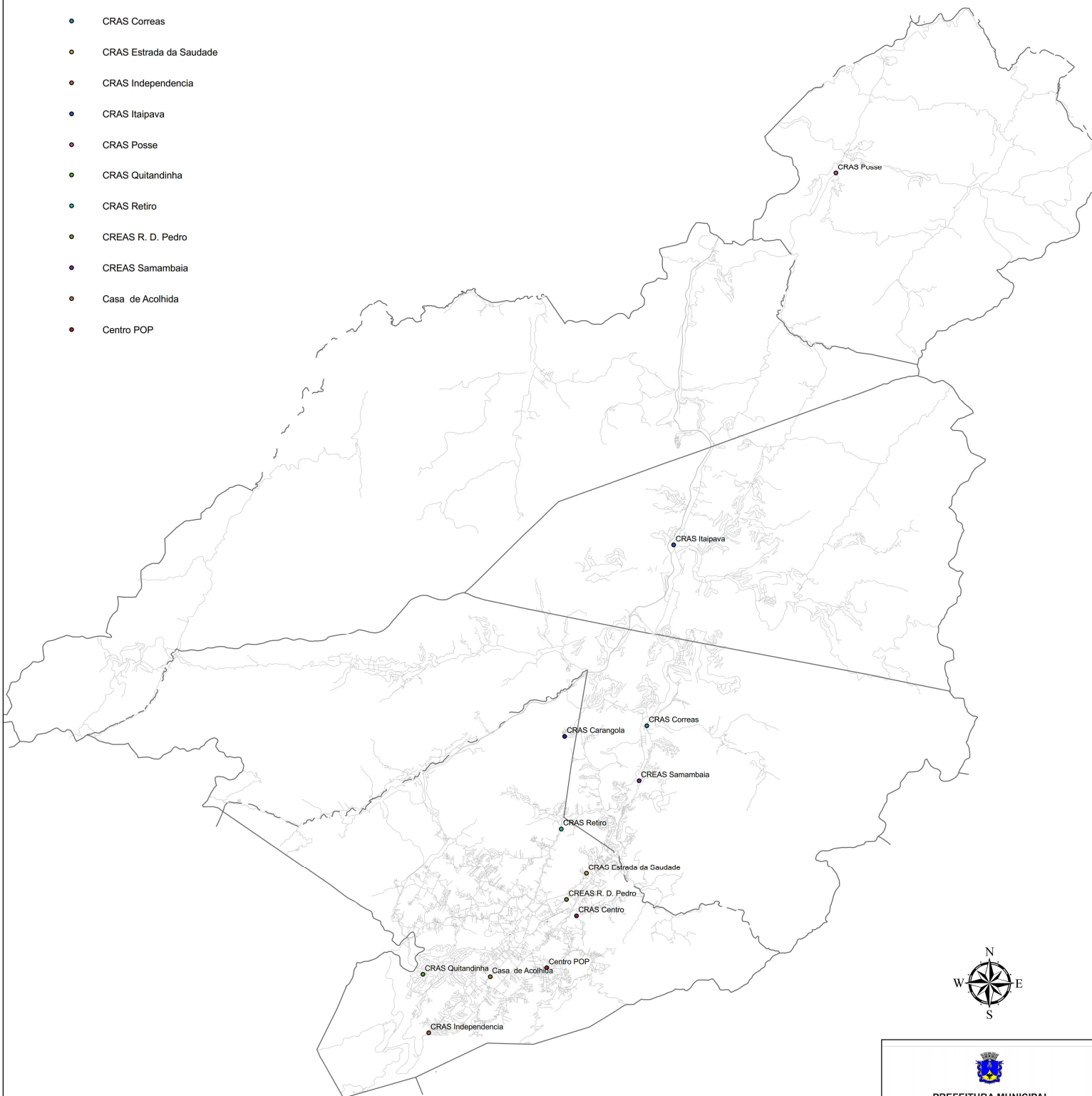


Legenda

CRAS

texto

- CRAS Carangola
- CRAS Centro
- CRAS Correias
- CRAS Estrada da Saudade
- CRAS Independencia
- CRAS Itaipava
- CRAS Posse
- CRAS Quitandinha
- CRAS Retiro
- CREAS R. D. Pedro
- CREAS Samambaia
- Casa de Acolhida
- Centro POP



**PREFEITURA MUNICIPAL
DE
PETRÓPOLIS**
SECRETARIA DE PLANEJAMENTO E URBANISMO

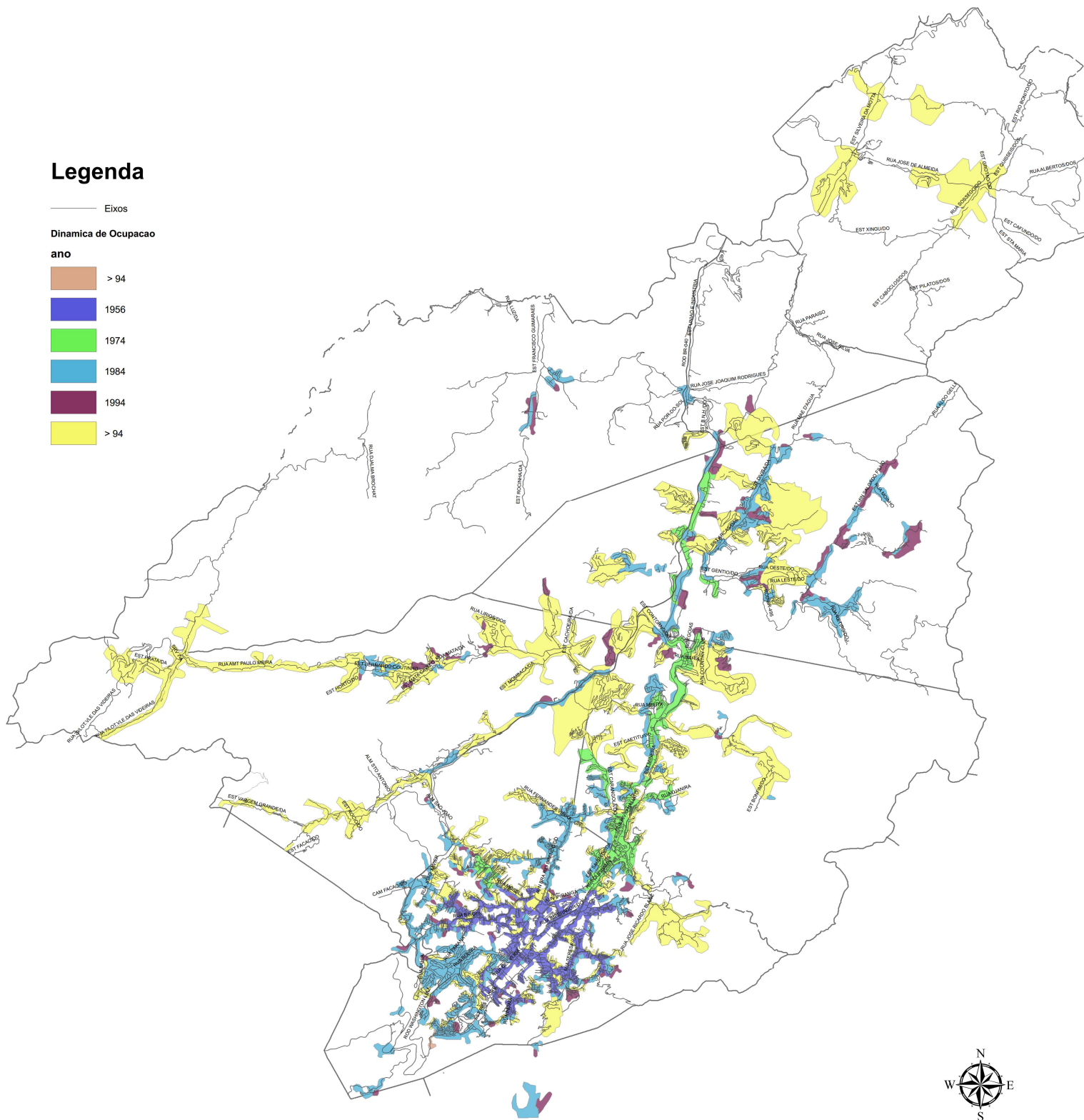
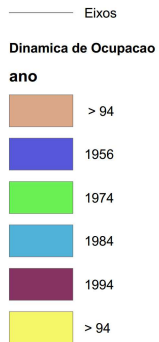
Local:

CRAS

Escala:

0 650 1.300 2.600 3.900 5.200 6.500
Meters

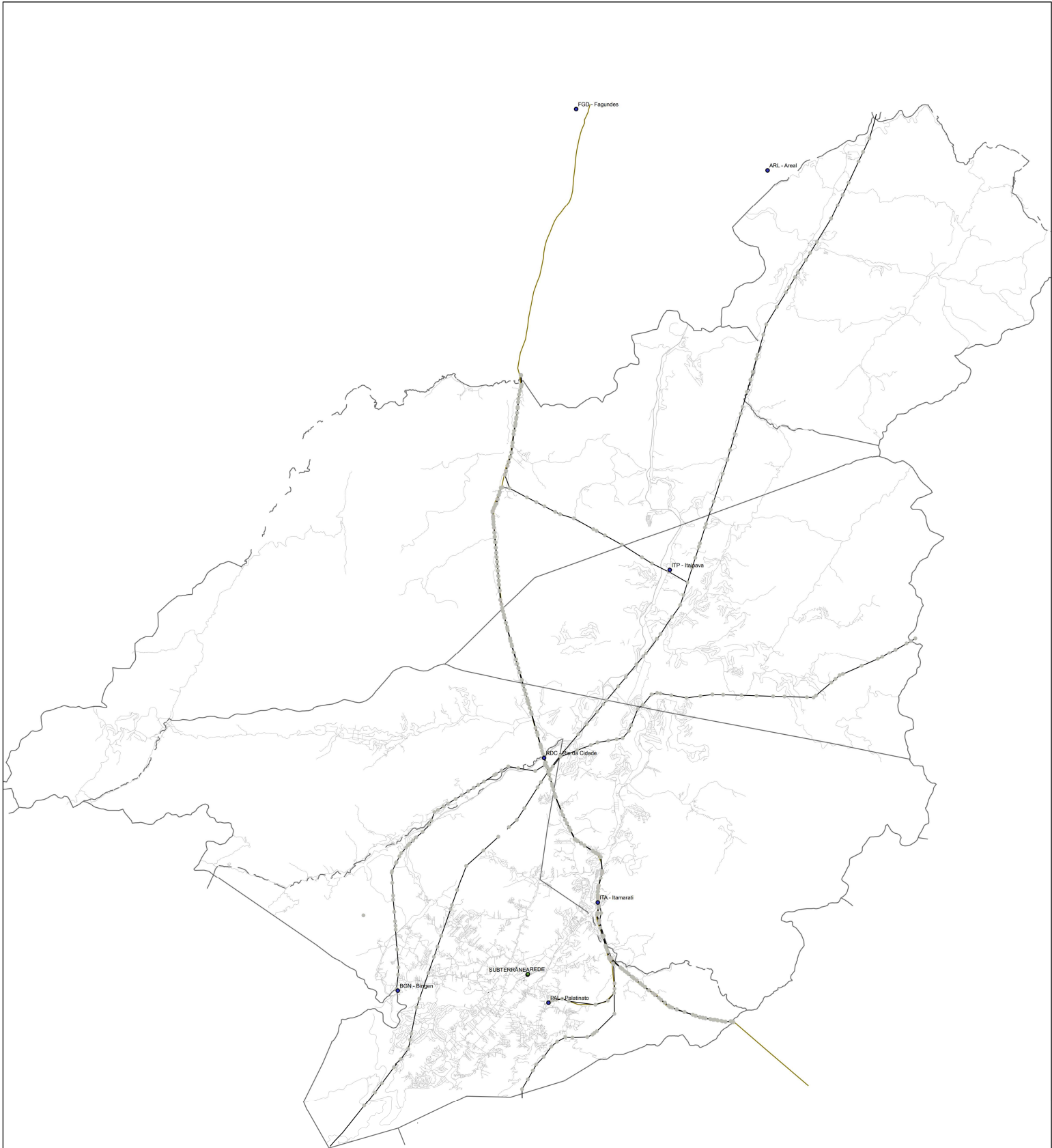
Legenda




PREFEITURA MUNICIPAL
DE
PETRÓPOLIS
SECRETARIA DE PLANEJAMENTO E URBANISMO

Local:
Dinâmica de Ocupação

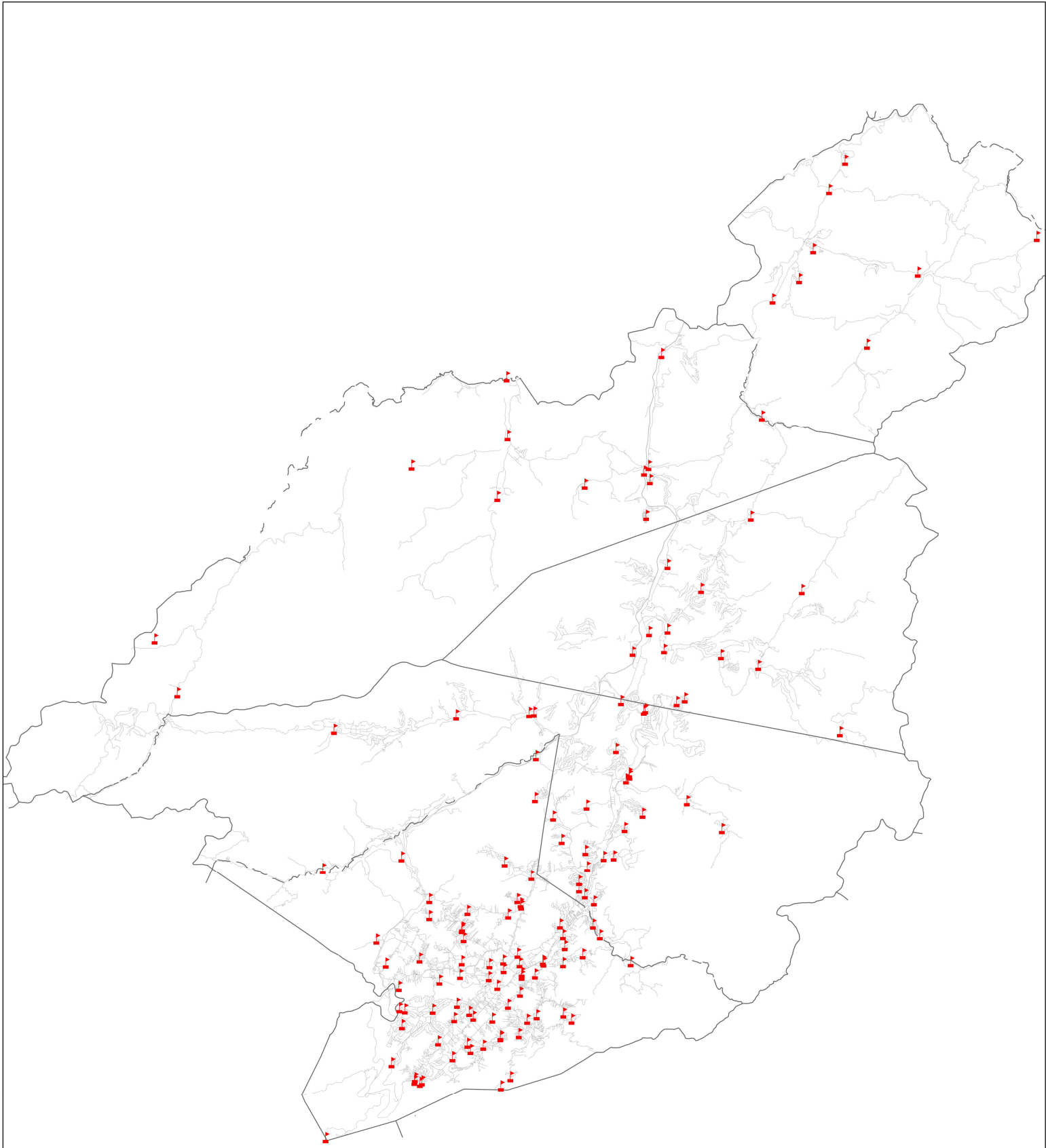
Escala:
0 650 1.300 2.600 3.900 5.200 6.500
Meters




**PREFEITURA MUNICIPAL
DE
PETRÓPOLIS**
SECRETARIA DE PLANEJAMENTO E URBANISMO

Local:
Distribuição Energia

Escala:
0 650 1.300 2.600 3.900 5.200 6.500
Meters



**PREFEITURA MUNICIPAL
DE
PETRÓPOLIS**
SECRETARIA DE PLANEJAMENTO E URBANISMO

Local:
Escolas

Escala:
0 650 1.300 2.600 3.900 5.200 6.500
Meters

Legenda

Pontos de Captação

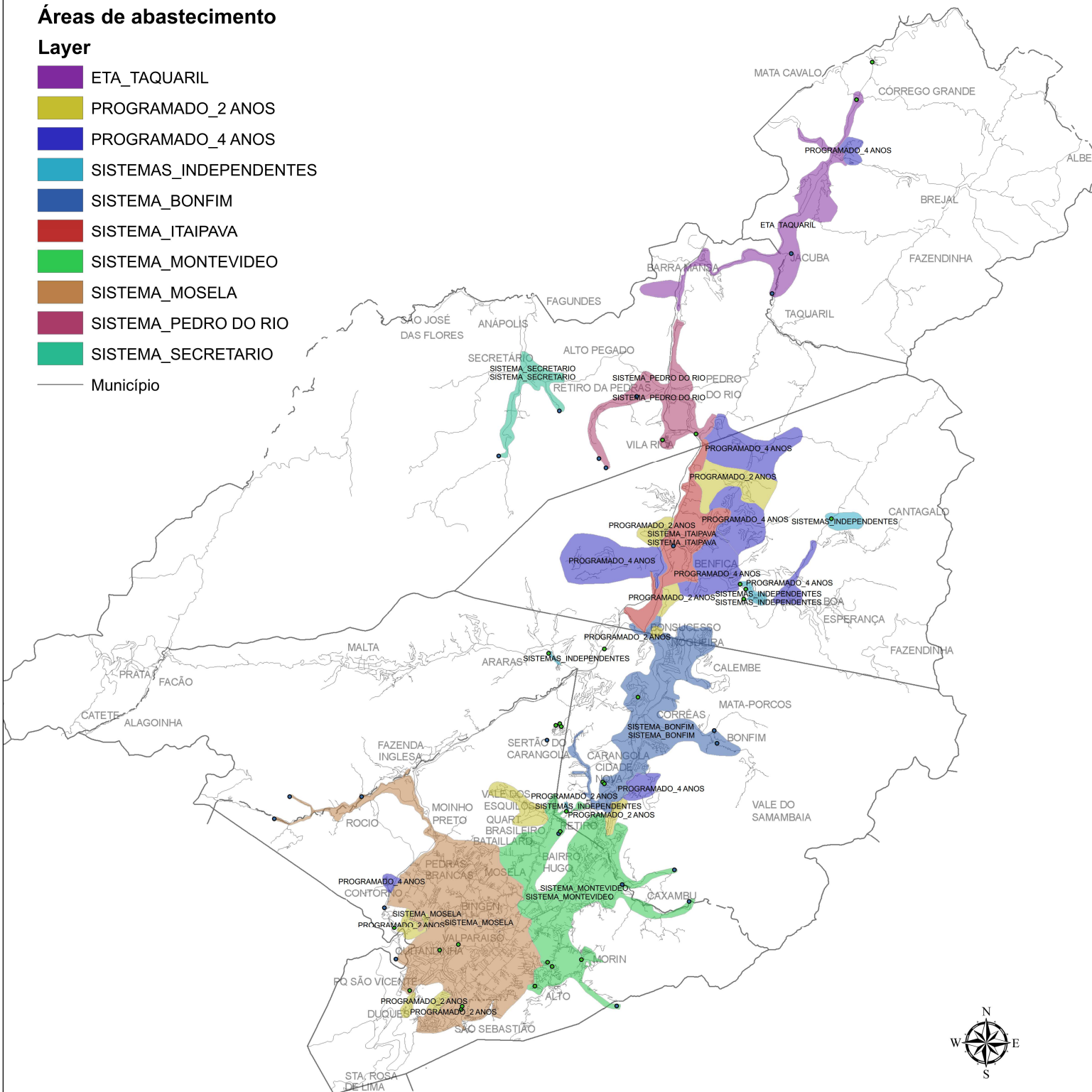
Layer


- CAPACAO_SUPERFICIAL
- CAPTACAO_SUBTERRANEA

Áreas de abastecimento

Layer

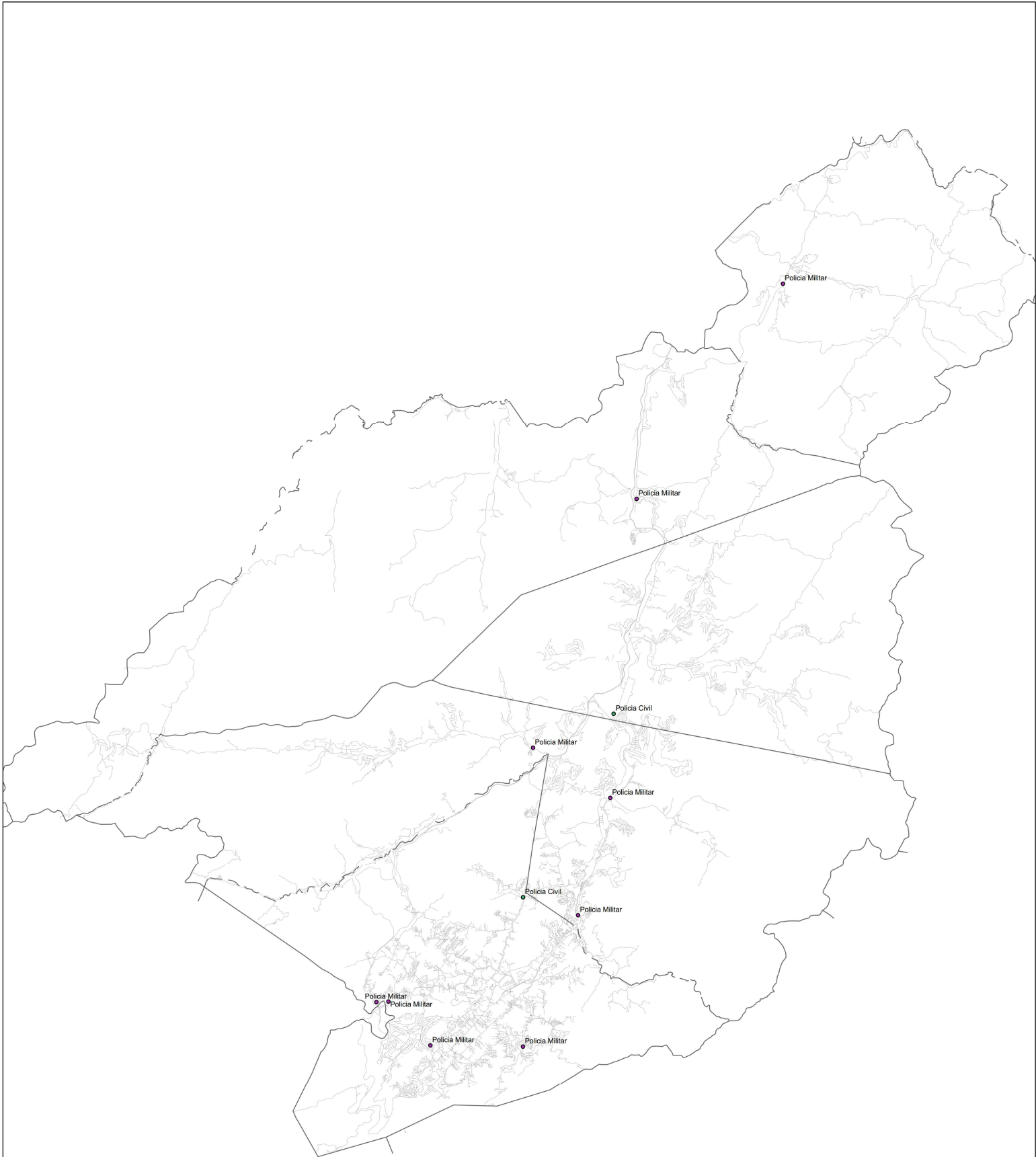
- ETA_TAQUARIL
- PROGRAMADO_2 ANOS
- PROGRAMADO_4 ANOS
- SISTEMAS_INDEPENDENTES
- SISTEMA_BONFIM
- SISTEMA_ITAIPAVA
- SISTEMA_MONTEVIDEO
- SISTEMA_MOSELA
- SISTEMA_PEDRO DO RIO
- SISTEMA_SECRETARIO
- Município




PREFEITURA MUNICIPAL DE PETRÓPOLIS
SECRETARIA DE PLANEJAMENTO E URBANISMO

Local:
Mananciais de Abastecimento

Escala:
0 500m 1.000m 2.000m 3.000m 4.000m 5.000m
Meters



Legenda

policia

corporacao

- Policia Civil
- Policia Militar



**PREFEITURA MUNICIPAL
DE
PETRÓPOLIS**

SECRETARIA DE PLANEJAMENTO E URBANISMO

Local:

Postos Policiais

Escala:

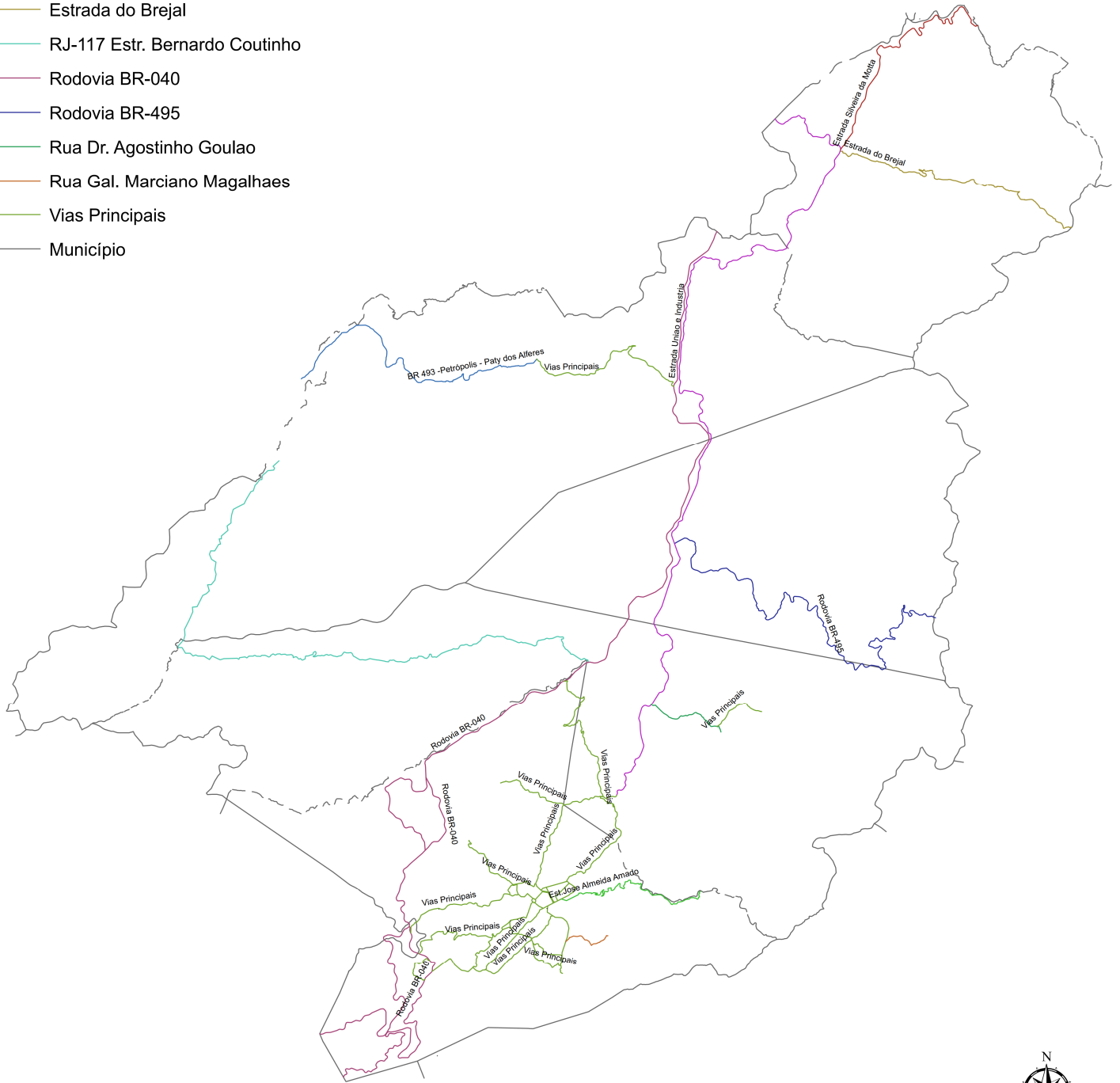
0 650 1.300 2.600 3.900 5.200 6.500
Meters

Legenda

Sistema Viario Estruturante

texto

- BR 493 -Petrópolis - Paty dos Alferes
- Est. Jose Almeida Amado
- Estrada Silveira da Motta
- Estrada Uniao e Industria
- Estrada do Brejal
- RJ-117 Estr. Bernardo Coutinho
- Rodovia BR-040
- Rodovia BR-495
- Rua Dr. Agostinho Goulao
- Rua Gal. Marciano Magalhaes
- Vias Principais
- Município



PREFEITURA MUNICIPAL
DE
PETRÓPOLIS

SECRETARIA DE PLANEJAMENTO E URBANISMO

Local:

Sistema Viário Estruturante

Escala:

0 650 1.300 2.600 3.900 5.200 6.500
Meters

